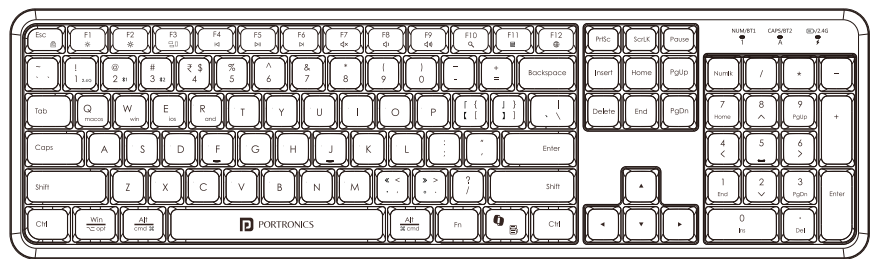




AKSHR PRIME

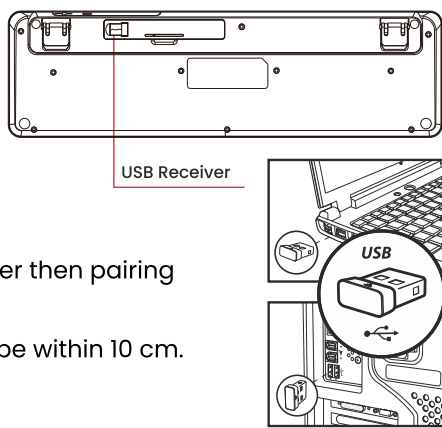
Rechargeable Wireless Keyboard



User Manual

Pairing via 2.4 GHz Wireless USB Receiver

1. Turn on the keyboard.
2. Insert the USB Receiver into your device.
3. You can now use the keyboard in 2.4 GHz Connectivity Mode.
4. If it does not work with 2.4G receiver then pairing method needs to be done.
5. While pairing, its distance should be within 10 cm.



Pairing via Bluetooth

Akshr Prime allows you to connect two devices via Bluetooth, one through Akshr, Akshr 2, Follow similar instructions below to connect a device via Akshr.

1. Turn on the keyboard and ensure the keyboard is in the desired mode (BT1, BT2).
2. Long press Fn +2 or Fn +3 to enter the Bluetooth Pairing Mode - the indicator light will begin flashing in this mode.

Introduction

Thank you for choosing the Portronics Akshr Prime, Rechargeable Wireless Keyboard. This user manual will guide you through the setup, operation, and maintenance of your keyboard for an optimal experience. Please read these instructions carefully before use.

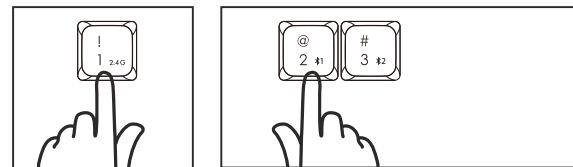
Safety Information

- The device's battery life is influenced by usage patterns, and environmental factors. We recommend using high-quality (5V 2A) USB to Type-c charging cable.
- Ensure the device remains dry and is protected from rain, humidity liquids, and condensation.
- Store the equipment within moderate temperature ranges; avoid high or low extremes.
- Do not use the device with wet hands.
- Do not use or store the device in dusty or dirty areas.
- Do not drop, knock, or shake the device.

What's Inside The Box

- | | |
|-----------------------|--------------------|
| 1 x Wireless Keyboard | 1 x User Manual |
| 1 x USB Receiver | 1 x Charging Cable |

4. Turn on the Bluetooth on the device (PC, Smartphone, or Tablet) you want to connect with the keyboard.
5. Scan for "Akshr" or "Akshr 2" on your device and connect with it.
6. The keyboard is now connected to your device and ready for use.



Switch between Bluetooth & 2.4 GHz Modes

Follow the below mentioned steps to switch between 2.4G, BT1 and BT2

- | | | | |
|--|---|--|--|
| | + | | Press Fn +1 to switch to 2.4Ghz |
| | + | | Press Fn +2 to switch to Akshr Bluetooth |
| | + | | Press Fn +3 to switch to Akshr 2 Bluetooth |

Technical Specifications

Wireless Mode	2.4 GHz Receiver & Bluetooth 5.0
Interface	USB & Bluetooth
Charging Port	Type-C
Compatible Operating	Windows 8.1 & higher macOS X 10.10 & higher
Dimensions (mm)	434x 125x 25

Function Key Shortcuts

To access the Function Key Shortcuts, use the following key combination:

- | | |
|----------------------------------|--------------------------|
| ESC: Return | FN+F6:NextTrack |
| FN+ESC: Lock FN | FN+F7:Mute |
| FN+F1:Decrease screen brightness | FN+F8:Decrease Volume |
| FN+F2:Increase screen brightness | FN+F9:Increase Volume |
| FN+F3:Show Mission Control | FN+F10:Search |
| FN+F4:Previous Track | FN+F11: Calculator |
| FN+F5:Play/Pause | FN+F12: Switch languages |

Auto Sleep Mode

After 10 minutes of inactivity, the keyboard will enter sleep mode. Press any key to wake it up.

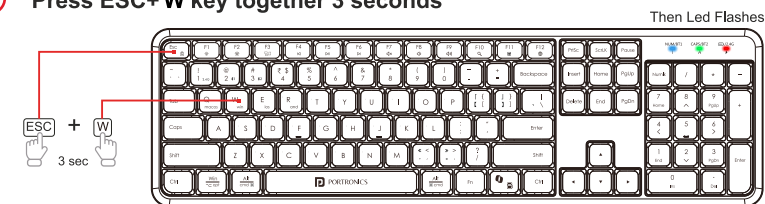
Switching Between OS

To switch between Os and use operating system specfic keys and shortcuts, follow the below instructions:

1. Macos: Long press Fn + Q key for 4 seconds
2. Windows: Long press Fn + W key for 4 secon
3. IOS: Long press Fn + E for 4 seconds
4. Android: Long press Fn + R key for 4 seconds

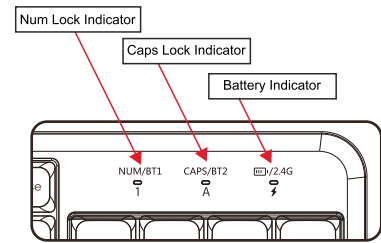
Reset Method

- 1 Turn on the power switch
- 2 Press ESC+W key together 3 seconds



Indicator Lights & Functions

Indicator	Status	Function
Num Lock Indicator	Solid Light	Numpad is activated
	Blinking	In pairing mode (BT1)
Caps Lock Indicator	Solid Light	Caps Lock is activated
	Blinking	In pairing mode (BT2)
Battery Indicator	Solid Red	Keyboard is switched on
	Blinking Red	In pairing mode (2.4G)
	Solid Red	Charging in progress
	Red light turns off	Fully charged



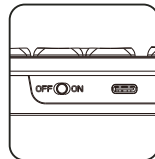
Charging The Keyboard

1. Connect the keyboard to a 5V 2A adaptor using the USB to Type-C charging cable.
2. Once fully charged, disconnect the cable from the keyboard.
3. The keyboard is now ready for use.

Note: Use only the provided USB to Type-C cable for charging

Powering On / Off

1. Locate the power switch at the top-right side of the keyboard.
2. Slide the button to the 'on' position, your wireless keyboard is now ready for use in Bluetooth or wireless USB receiver mode.
3. When you're finished using the keyboard or want to conserve battery power, slide the power button to the Off position.



3 Plug Receiver, Paired



Tips: Turn on switch, press ESC+W together for 3 seconds, plug receiver, LED flashes, paired

Please note: Any damage caused by physical impact, water / liquid, fire, etc. caused by the customer or nature shall not be covered under warranty. Only product design, feature and functionality-related faults can be considered. During the warranty period, this product is only eligible for replacement and not eligible for repair, as per the brand's discretion.



www.portronics.com
For Support

Visit : www.portronics.com
E-mail : help@portronics.com

Contact No.: +91 9555245245
(Working Hours: Monday - Saturday, 10:00am - 6:00pm)



E-Waste Management
E: info@3recycler.com
For E-Waste & ROHS compliance
refer to www.portronics.com/ewaste