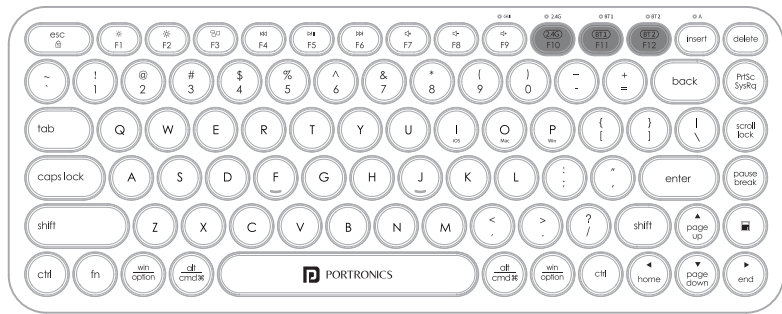




# BUBBLE 2.0

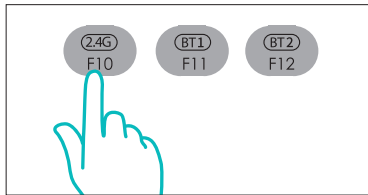


WIRELESS KEYBOARD WITH  
2.4 GHZ RECEIVER & BLUETOOTH

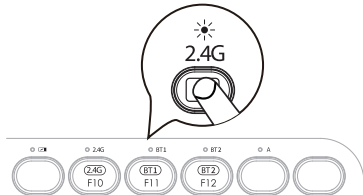
User Manual

## Multi-Device Connectivity

- Bubble 2.0 offers three distinct connectivity channels: 2.4GHz, Bluetooth 1 (BT1), and Bluetooth 2 (BT2). This enables seamless usage with up to three different devices, including desktops, laptops, mobile phones, and tablets, without any confusion.
- To initially connect a device, long press any channel button – F10 (2.4 Ghz), F11 (BT1), or F12 (BT2) for 3 seconds. The connection process is similar to the one described above.
- Once the device is successfully connected, you can proceed to add additional devices.
- After connecting three different devices to their respective channels, if you wish to switch between them, simply press the corresponding channel button for 1 second.
- The indicator light will illuminate for 3 seconds and then turn off.
- This indicates that the channel switching is complete, and you can now use the keyboard with the selected device.



Press Easy-Switch button for 1 second.  
(Blinking light means the keyboard is ready for pairing.)



Steady Light for 3 seconds indicates successful pairing.

## What's Inside The Box

- 1 x Wireless Keyboard
- 1 x USB Receiver
- 1 x User Manual
- 2 x AAA Batteries

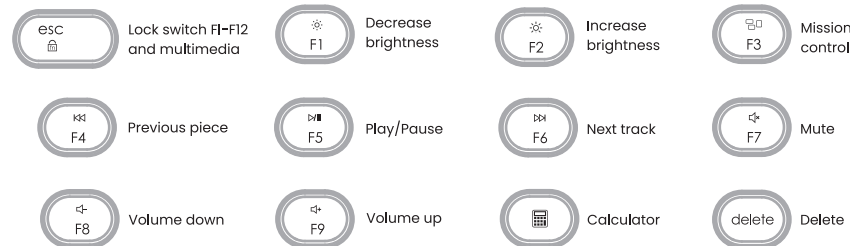
## Getting Started

- To begin using your wireless keyboard, locate the battery compartment lid at the back side of the device.
- Gently remove the lid to access the battery compartment, and then insert 2 AAA batteries (batteries included) following the polarity (+ and -) markings inside the compartment.
- Ensure the batteries are properly aligned, and after inserting them, securely place the battery compartment lid back in its original position.

## Powering On / Off

- Locate the power slide button at the top/upper side of the keyboard.
- Slide the button to the 'On' position.
- Your wireless keyboard is now ready for use.
- When you're finished using the keyboard or want to conserve battery power, slide the power button to the 'Off' position.

## Quick Function



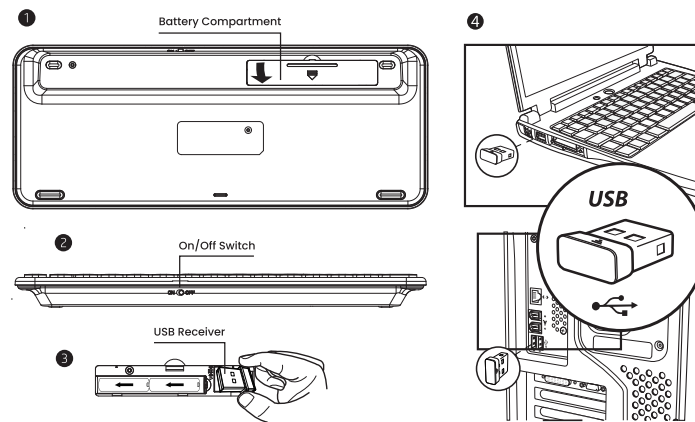
## Multimedia Switch

F1-F12 Switch +

- Default mode: The multimedia buttons at the top of the front row perform their standard functions. You can easily switch among them by pressing the buttons directly.
- To access the functions on the bottom of the F1-F12 keys, press Fn + Esc together to activate function lock. You will now be able to use the top row as function buttons.
- To return to default mode press the Fn + Esc again, allowing you to switch between 2.4G, BT1, BT2, and multimedia key functions.

## 2.4 GHz Mode Setup

- Locate the battery compartment at the back side of the keyboard.
- Carefully remove the battery compartment lid.
- Inside the battery compartment, you will find the 2.4 GHz USB receiver. Gently remove it.
- Insert the 2.4 GHz USB receiver into your device's USB port.
- Turn on the keyboard by sliding the power button to the 'On' position (if applicable).
- Press the F10 (2.4G) key located at the upper right side of the keyboard.
- Upon pressing the F10 (2.4G) key, the indicator light above it will turn on for 2-3 seconds and then turn off.
- Your wireless keyboard is now ready to use in 2.4 GHz mode.



## Low Battery Warning



When the battery power is too low, the battery is in a state of low voltage. The battery symbol indicator lights will flash a red light as an alarm, indicating the need to replace the battery promptly to continue use.

## Technical Specifications

Wireless Mode	2.4 GHz & Bluetooth 5.3
Batteries	2 x AAA Batteries (included)
Key Life	10 million keystrokes
Working Distance	10 metres
Compatible Operating Systems	Windows 8.1 & higher macOS X 10.4 & higher iOS 12 & higher
Dimensions (mm)	314 x 124 x 22
Weight	375 grams

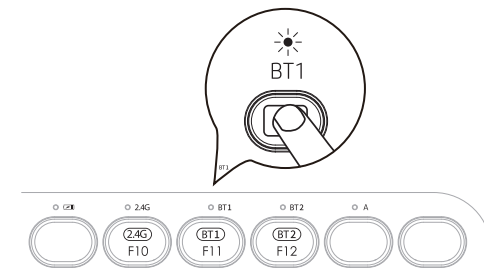
**Please note:** Any damage caused by physical impact, water / liquid, fire, etc. caused by the customer or nature shall not be covered under warranty. Only product design, feature and functionality-related faults can be considered. During the warranty period, this product is only eligible for replacement and not eligible for repair, as per the brand's discretion.

## Bluetooth Pairing

Bubble 2.0 allows you to connect two devices via Bluetooth, one through BT1 and the other through BT2. Follow similar instructions below to connect a device via BT2.

- Turn on the keyboard by sliding the power button to the 'On' position.
- Press the F11 (BT1) key and the indicator light above BT1 will turn on.
- Long press the BT1 key till the indicator light begins flashing. The keyboard has now entered Bluetooth Pairing Mode.
- On your device (e.g., laptop, tablet, or smartphone), go to the Bluetooth settings.
- Enable Bluetooth on your device if it's not already on.
- In the Bluetooth settings, scan for available devices.
- When you see 'Bubble 3.0' or 'Bubble 5.0' listed, select it to initiate pairing.
- Once paired successfully, a confirmation message will appear on your device.
- Your wireless keyboard is now connected via Bluetooth and ready to use.

**Note:** If you press a key on the keyboard and the indicator above BT1 blinks 5 times, this indicates that the Bluetooth has disconnected.



## Switching OS Compatibility

The Bubble 2.0 wireless keyboard features Windows, macOS and iOS modes to ensure compatibility with your device (laptop, smartphone, tablet, etc.).

- Windows Mode: Press Fn Key + P to switch to Windows compatibility
- macOS Mode: Press Fn Key + O to switch to macOS compatibility
- iOS Mode: Press Fn Key + I to switch to iOS compatibility

## Do's and Don'ts

- The device's battery life varies by battery brand, usage, and environmental factors. We recommend using heavy-duty AAA batteries from reputable brands.
- Ensure the device remains dry and is shielded from rain, humidity, liquids, and condensation.
- Store the equipment within moderate temperature ranges; avoid high or low extremes.
- Do not use the device with wet hands.
- Do not use or store the device in dusty or dirty areas.
- Do not drop, knock or shake the device.

[www.portronics.com](http://www.portronics.com)

For Support

Visit : [www.portronics.com](http://www.portronics.com)

E-mail : [help@portronics.com](mailto:help@portronics.com)

Contact No.: +91 9555245245, 011-42413131

(Working Hours.: Monday - Saturday, 10:00am - 6:00pm)



E-Waste Management  
E: [info@3recycler.com](mailto:info@3recycler.com)

For E-Waste & ROHS compliance  
refer to [www.portronics.com/ewaste](http://www.portronics.com/ewaste)