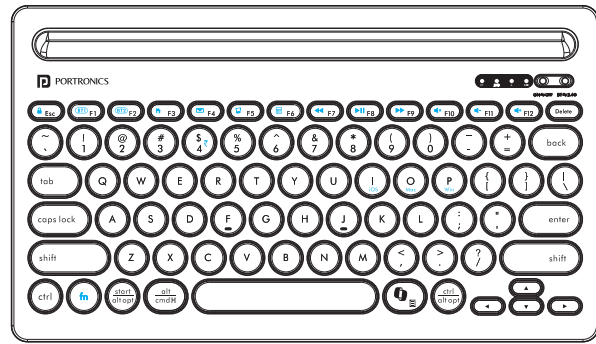


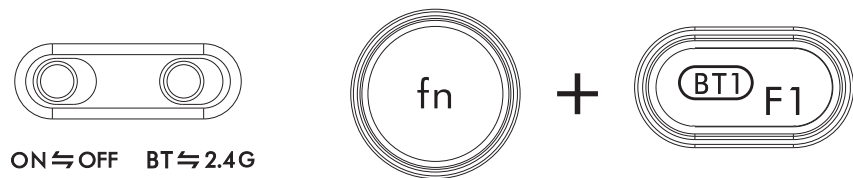


Bubble Dock



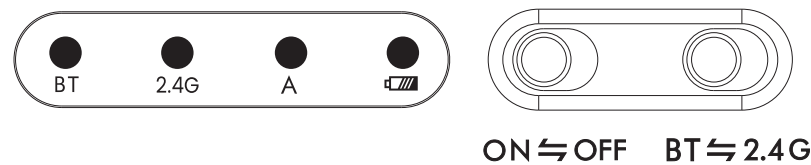
WIRELESS KEYBOARD

User Manual



Multi-Device Connectivity

- Bubble Dock offers three distinct connectivity channels: 2.4 GHz RF, Bluetooth 1 (BT1), and Bluetooth 2 (BT2). This enables seamless pairing with up to three different devices, including desktops, laptops, mobile phones, and tablets, without any confusion.
- Switch the keyboard to 2.4 GHz RF or Bluetooth connectivity mode using the Connectivity Mode switch on the top-right corner of the keyboard. For detailed steps, refer to the following sections to pair devices via Bluetooth or wireless USB receiver.
- Once one device is successfully paired, you can proceed to add additional devices.
- After pairing three different devices to their respective channels, if you wish to switch between them, simply use the connectivity mode switch to toggle between 2.4 GHz USB Receiver & Bluetooth. To switch between the two bluetooth modes, press Fn + F1 or Fn + F2.



Package Contents

- 1 x Wireless Keyboard
- 1 x USB Receiver
- 1 x Charging Cable
- 1 x User Manual

Getting Started

- To begin using your wireless keyboard, charge the keyboard with a USB to Type-C charging cable (provided in box).
- Charge the keyboard for 2 hours to fully charge it, especially before first-time use.
- While charging, there will be a green light which will get off once the charging is full.
- Use only a high-quality USB to Type-C charging cable to charge the keyboard.

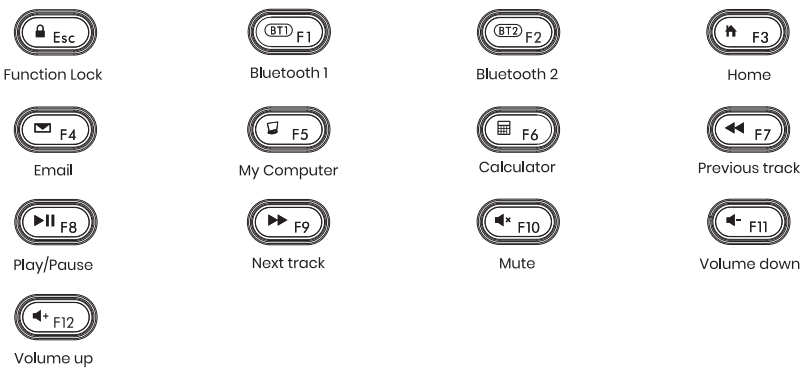
Powering On / Off

- Locate the power switch at the top-right side of the keyboard.
- Slide the button to the 'On' position, your wireless keyboard is now ready for use in Bluetooth or wireless USB receiver mode.
- When you're finished using the keyboard or want to conserve battery power, slide the power button to the 'Off' position.

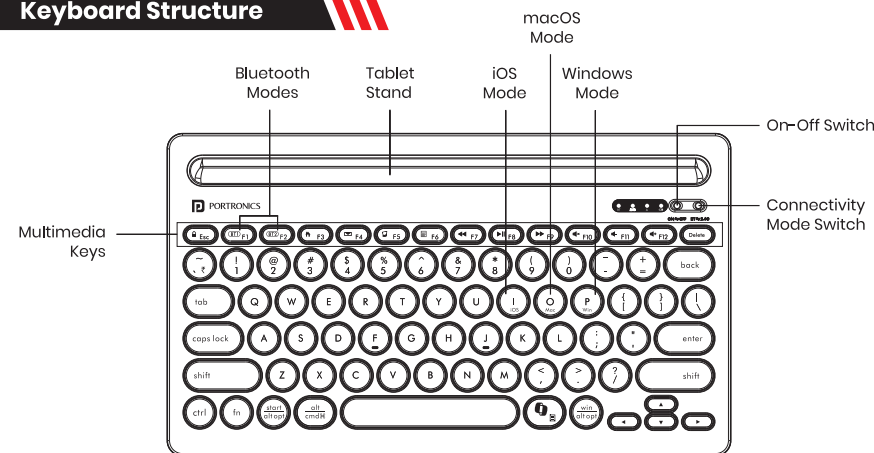
Multimedia Function Lock

- Default mode: The function buttons at the top of the front row perform their standard functions. You can easily switch among them by pressing the buttons directly.
- To access the multimedia shortcuts on the F1-F12 keys, press Fn + Esc key to activate function lock. You will now be able to use the top row as multimedia hotkeys buttons.
- To return to default mode press the Fn + Esc again, allowing you to switch between Function and multimedia key actions.

Quick Function



Keyboard Structure



2.4 GHz USB Receiver Mode

- Locate and gently remove the USB receiver from its compartment at the back of the keyboard.
- Insert the 2.4 GHz USB receiver into your device's USB port.
- Turn on the keyboard by sliding the power button to the 'On' position.
- Slide the Connectivity Mode switch to 2.4G to switch to the 2.4 GHz mode.
- Upon switching to 2.4G, indicator light will blink and indicate that the keyboard is now ready to use with the 2.4 GHz wireless USB receiver.

Switching Between OS

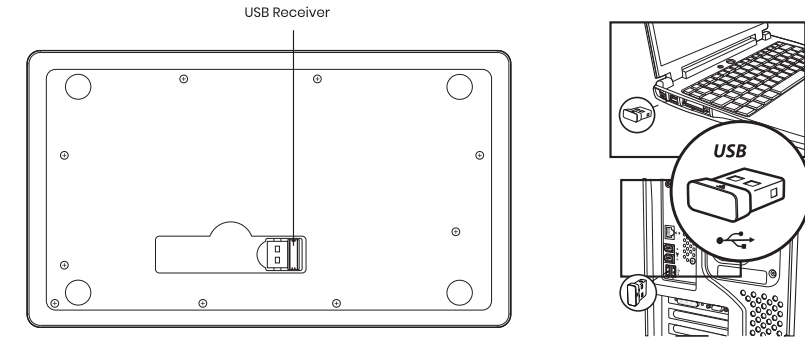
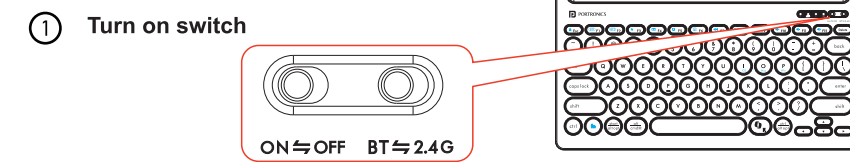
To switch between OS and use operating system specific keys and shortcuts, follow the below instructions:

- Windows: Long press Fn + P key for 4 seconds
- macOS: Long press Fn + O key for 4 seconds
- iOS: Long press Fn + I key for 4 seconds

Please Note

- Ensure the device remains dry and is shielded from rain, humidity, liquids, and condensation.
- Store the equipment within moderate temperature ranges; avoid high or low extremes.
- Do not use the device with wet hands.
- Do not use or store the device in dusty or dirty areas.
- Do not drop, knock or shake the device.

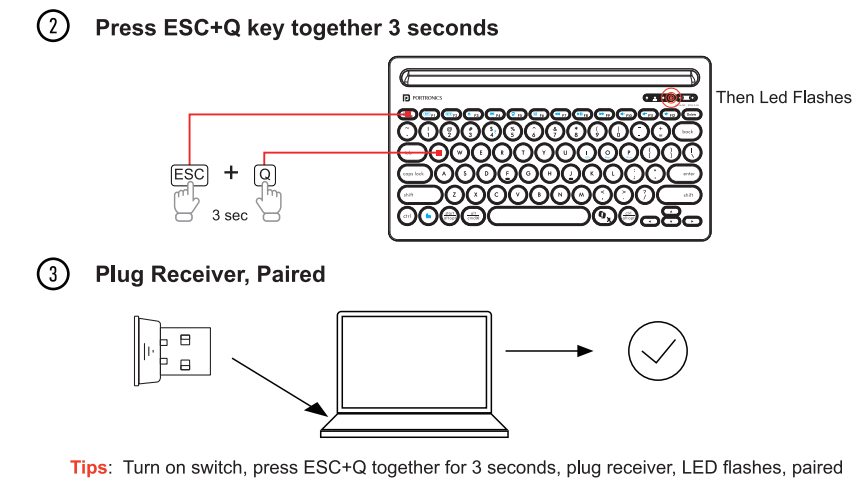
Reset method



Bluetooth Mode

Bubble Dock allows you to connect two devices via Bluetooth, one through BT1 and the other through BT2. Below are instructions for BT1 Bluetooth, follow similar instructions below to connect a device via BT2.

- Turn on the keyboard by sliding the power button to the 'On' position.
- Toggle the Connectivity Mode switch to BT and the BT indicator light will turn on.
- Long Press Fn + F1 key and the indicator light above BT1 will enter pairing mode and continue blinking.
- Search for and connect with Bubble Dock in your device's (laptop, PC, smartphone or tablet) Bluetooth settings.
- The keyboard is now connected with your device and ready to use.
- To unpair the keyboard and enter pairing mode again, press Fn + F1 key.



www.portronics.com
For Support

Visit : www.portronics.com
E-mail : help@portronics.com
Contact No.: +91 9555245245
(Working Hours: Monday - Saturday, 10:00am - 6:00pm)



E-Waste Management
E: info@3rrecycler.com
For E-Waste & ROHS compliance refer to www.portronics.com/ewaste