



## MPORT SPACE

8-in-1 Type-C Hub with Built-In SSD Slot

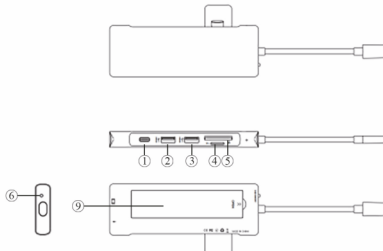


User Manual

### INTRODUCTION

Thank you for purchasing the Portronics Mport Space 8-in-1 USB-C Hub. Please read this manual carefully before using the product to ensure optimal performance and extended life.

### PRODUCT OVERVIEW



This hub expands your device's connectivity with 8 versatile ports, including an M.2 SSD slot for instant storage expansion.

#### A. INCLUDED PORTS

- USB-C 3.2 Port – Provides up to 10Gbps high-speed data transfer.
- USB-A 3.2 Port – Provides up to 10Gbps high-speed data transfer.
- USB 2.0 Port – Ideal for printers, wired keyboards, mice, and other peripherals.
- TF Card Reader – Access and transfer photos, videos, and media files seamlessly.

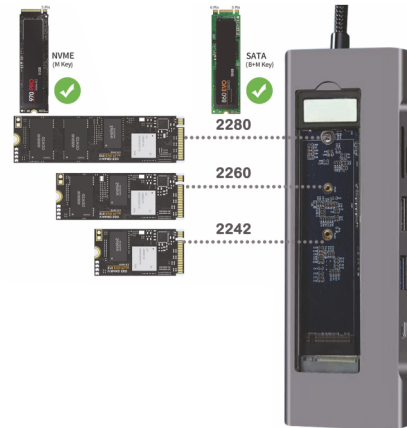
- SD Card Reader – Access and transfer photos, videos, and media files seamlessly.
- HDMI Output – Connect your display to any standard HDMI screen.
- 100W USB-C PD Charging Port – For charging only, not for data transfer.
- M.2 Slot – Supports M.2 NVMe/SATA SSDs.

#### B. KEY FEATURES

- SSD On/Off Switch – Manually turn the internal SSD ON or OFF to save power and prolong SSD life.
- LED Status Indicator –
  1. Blue Light : SSD feature is OFF.
  2. White Light : SSD feature is ON (ready for use).

### SPECIFICATIONS

- HDMI (4K @ 30Hz) : Supports up to 4K/30Hz output
- USB-A 3.2 Port : Supports 10 Gbps transmission rate
- USB 2.0 Port : Supports 480 Mbps transmission rate
- USB-C PD Port : 100W Power Delivery – Charging only (no data)
- USB-C 3.2 Port : Supports 10 Gbps transmission rate
- SD Card Slot : Up to 104 MB/s transfer speed
- TF Card Slot : Up to 480 MB/s transfer speed
- M.2 SSD Slot : Supports NVMe & SATA SSDs (M-Key / B+M-Key)
- Compatible with : M.2 NVMe & M.2 SATA SSDs
- Supported Keys : M-Key & B+M-Key
- Compatible sizes : 2242 / 2260 / 2280.



### INSTALLATION & SETUP GUIDE

#### IMPORTANT NOTES :

- Supported SSDs : M.2 NVMe (M-Key) and M.2 SATA (M-Key or B+M-Key)
- First-Time Setup : If using a brand-new SSD, you must initialize and format it before use to create a partition.

#### 1. SSD INSTALLATION GUIDE :

Follow these steps to install your M.2 SSD safely

STEP 1: Remove the SSD cover from the hub.



STEP 3 : Secure the SSD using the provided screw. Tighten gently – do not overtighten.



STEP 2 : Insert the M.2 SSD into the slot at a slight angle, making sure the notch aligns correctly.

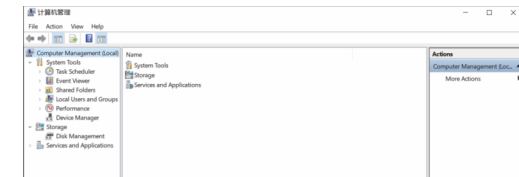


STEP 4 : Close the SSD cover and ensure it is aligned properly.

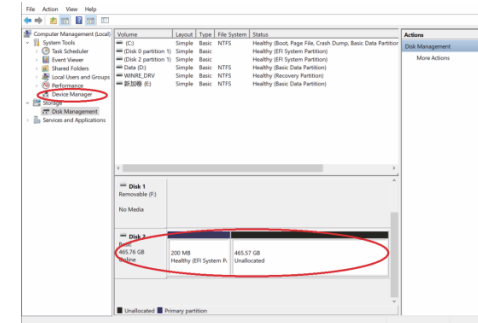


#### 2. FORMATTING ON WINDOWS :

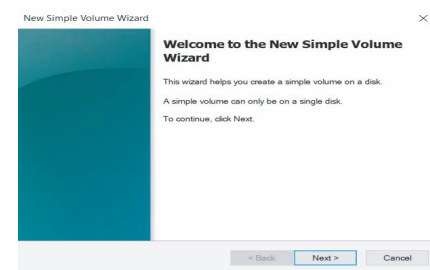
STEP 1 : Right-click "This PC" (or "My Computer") on your desktop. Select "Manage" → "Computer Management" window opens.



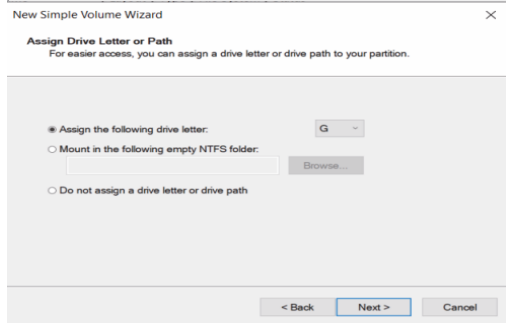
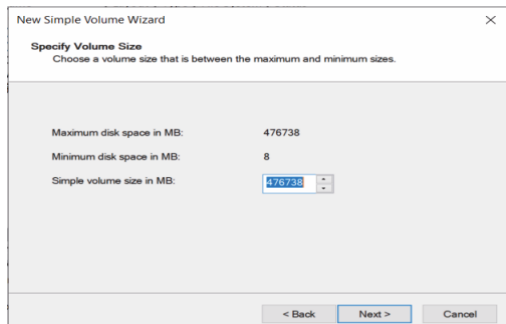
STEP 2 : Click "Disk Management" in the left panel. A new unallocated hard disk (your SSD) will appear



STEP 3 : Right-click on the unallocated disk. Select "New Simple Volume" → The "New Simple Volume Wizard" will open.

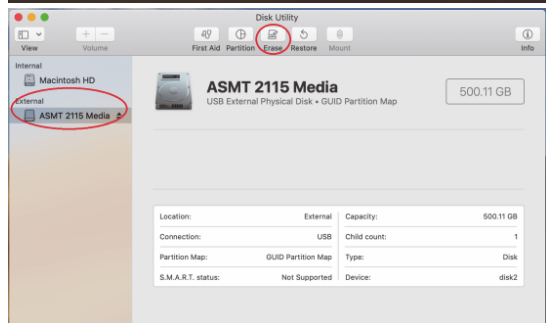


STEP 4 : Click "Next" on each screen to keep default settings (volume size, drive letter, file system). Click "Finish" to complete the process.

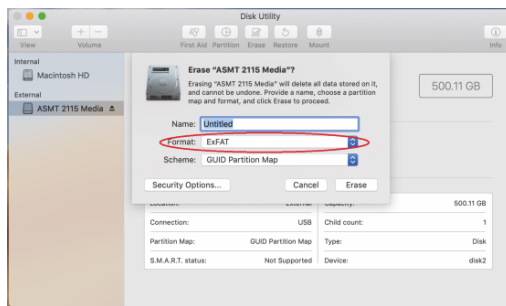
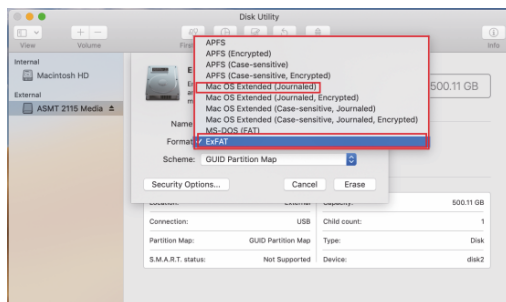


#### 3. FORMATTING ON MACOS :

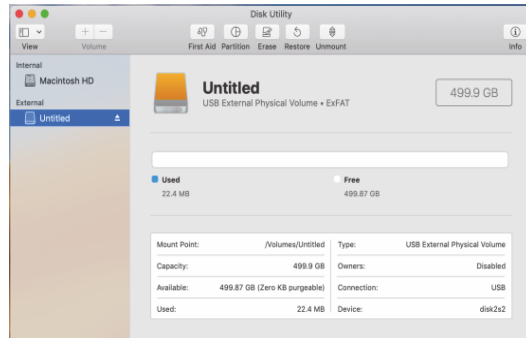
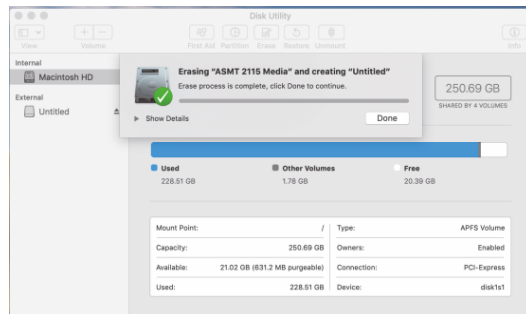
Step 1 : Go to Applications > Others > Disk Utility. Select your new SSD from the left-hand panel.



STEP 2 : Click Erase on the top menu. In the pop-up dialog box, select : Name : (Choose any name for your SSD) Format : exFAT (Recommended – works with both macOS and Windows) Scheme: GUID Partition Map



STEP 3 : Click Erase to format the SSD. Wait for the process to finish. The new SSD volume will appear in Disk Utility, ready for use.



### FREQUENTLY ASKED QUESTIONS (FAQ)

Q: Can I use this hub with my Microsoft Surface Book 2?

A: Yes. First, check that your device has a USB-C port. If it does, the hub is compatible – it works with multiple systems including Windows, macOS, and more.

Q: Why can't my M.2 SSD in the hub's slot allow writing in macOS, even though it works fine in Windows?

A: macOS may not support writing to NTFS drives by default. Format your SSD to exFAT for full read/write access in both macOS and Windows.

You can also install third-party NTFS drivers on macOS if you want to keep NTFS format.

Q: The M.2 enclosure is not recognized after connecting – what should I do?

A: Open the hub, remove the SSD, and reinstall it, ensuring the position and pins are aligned. If it is a brand-new SSD, format it first following the steps in the manual.

On macOS, install NTFS drivers if you are using NTFS format.

Q: Is there a sleep setting for this enclosure? Will my SSD stop data transfer automatically?

A: The hub includes an SSD On/Off Switch. Turn OFF the SSD when not in use to prolong its life. If your computer is actively reading/writing (e.g., during file transfer or antivirus scans), it will not automatically sleep.

Q: Can the USB-C data port be used for video output?

A: No. The USB-C data port is for data transfer only. For video, use the HDMI output port.

Q: How can this hub achieve 85W power delivery charging?

A: Use a USB-C wall charger and a USB-C to USB-C cable that both support 100W PD charging.



www.portronics.com

For Support

Visit : www.portronics.com

Email : help@portronics.com

Contact No. : +91 9555245245

Working Hrs. : Monday - Saturday 10:00am - 6:00pm



E-Waste Management  
E: info@3recycler.com

For E-Waste & ROHS compliance  
refer to www.portronics.com/ewaste