



# ORIA

Magnetic Clip-On Selfie Light with Mirror

User Manual

## PRODUCT OVERVIEW

Thank you for purchasing the Portronics Oria: Magnetic Beauty Light!

This compact and portable light is designed to enhance your selfies, videos, and makeup sessions with effortless brightness. Its magnetic design lets it attach easily to your phone or magnetic ring, while the built-in mirror helps you look your best anytime. You can adjust brightness and color tone smoothly. With a long-lasting rechargeable battery, Type-C fast charging, and a foldable, lightweight build, it's your perfect on-the-go lighting companion

## SAFETY TIPS

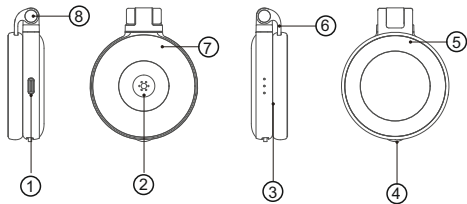
- Avoid dropping or exposing to moisture.
- Clean with a soft, dry cloth.
- Do not charge with high voltage adapters.
- Do not disassemble or repair on your own.

## PACKAGE CONTENTS

- Magnetic Beauty Light × 1
- Magnetic Ring × 1
- Type-C Charging Cable × 1
- User Manual × 1

## SPECIFICATIONS

Battery : 500mAh / 3.7V  
Charging Power : 5V / 1A (Type-C)  
Max Power : 2.5W



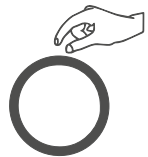
1. Type-C Port : For fast charging.
2. Switch Button : Power on/off and switch modes.
3. Battery Indicator : Shows charge status.
4. Brightness Control : Adjusts light intensity.
5. Magnetic Ring : Attaches securely to your phone.
6. Extension Rod : Adjusts height and angle.
7. Diffuser : Softens and spreads the light evenly.
8. Shaft : Connects and supports the main body.

## HOW TO USE

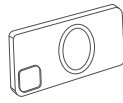
### 1. Attach Magnetically :

For iPhone 12 or newer: attach directly.

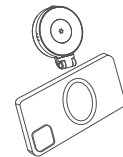
For other phones: stick the provided magnetic ring to the phone or case.



Peel off the protective sticker from the magnetic ring.



Stick the ring on the back of your phone or case.



Attach the light magnetically and start using it.

### 2. Power On/Off & Light Modes :

Long-press the Mode button for 3 seconds to power on/off.

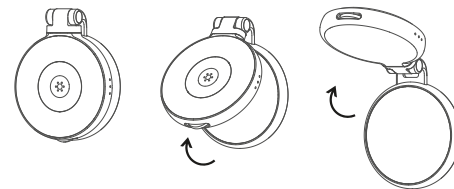
Short-press to switch between three light modes – White Light, Warm Light, and Cool Light.

### 3. Adjust Brightness :

Rotate the knob to increase or decrease brightness.

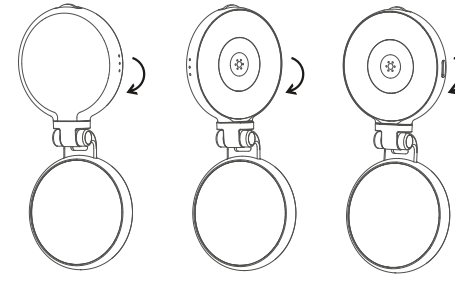
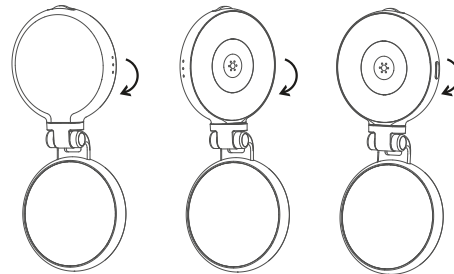
### 4. Use as Mirror :

Flip the light for mirror use; can rotate 180° for better angles.



### 5. Extend for Lighting :

Pull up the extension rod for multi-angle lighting.



E-Waste Management  
E: info@3rrecycler.com  
For E-Waste & ROHS compliance  
refer to [www.portronics.com/ewaste](http://www.portronics.com/ewaste)

[www.portronics.com](http://www.portronics.com)

For Support

Visit : [www.portronics.com](http://www.portronics.com)

Email : [help@portronics.com](mailto:help@portronics.com)

Contact No. : +91 9555245245

(Working Hours.: Monday - Saturday 10:00am - 6:00pm)