



20W
FAST CHARGING

POWERPEBBLE

5000 mAh Power Bank



Thank-you for choosing Portronics. We're happy to help you understand how to use this product. Read on!

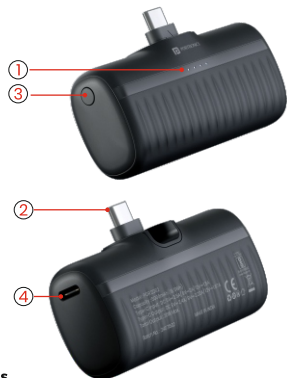
User Manual

Package Contents :

1. Power Bank
2. Charging Cable
3. User Manual

PowerPebble

1. LED Indicator
2. Type-C Male Port Input/Output
3. Wake up Button
4. Type-C Female Port Input/Output



Charging Your Devices

A button is located on the side of the Power Bank.

- When the button is pressed, the LED indicators display the remaining battery capacity, and it also powers on the Power Bank.
- The LED indicators turn off by double pressing the power button.

When charging a device, please refer to the guide below to understand the LED Indications:

Percentage	LED 1	LED 2	LED 3	LED 4
76 - 100%	On	On	On	On
51 - 75%	On	On	On	Off
26 - 50%	On	On	Off	Off
1 - 25%	On	Off	Off	Off
0%	Off	Off	Off	Off

Charging the Power Bank

Repeat the steps mentioned above to navigate through the powerbank. When charging your Powerbank, please refer to the guide below to understand the LED Indications.

Percentage	LED 1	LED 2	LED 3	LED 4
0 - 25%	Blinking	Off	Off	Off
26 - 50%	On	Blinking	Off	Off
51 - 75%	On	On	Blinking	Off
76 - 100%	On	On	On	On
Abnormal	Blinking	Blinking	Blinking	Blinking

To charge your powerbank, connect the Type C port located on the Power Bank to the charger, using the Charging cable provided.

DOS and DON'Ts

- Make sure the Power Bank is fully charged prior to use.
- Use a cable suitable for your device when charging it from the Power Bank.
- When charging the Power Bank, it is recommended that you use the included charging cable.
- Recharge the Power Bank as soon as possible to avoid shortening the battery life.
- The battery should be charged at least every three months to avoid shortening the battery life.
- Do not wash the Power Bank with corrosive cleaner.

Technical Specifications :

Capacity : 5000mAh (18.5Wh)
 Type-C Input : DC 5V=2.5A/ 9V=2A/ 12V=1.5A
 Type-C Output : DC 5V=2.4A/ 9V=2.22A/ 12V=1.67A
 Total Output : 20W Max.



www.portronics.com

For Support

Visit : www.portronics.com

Email : help@portronics.com

Contact No. : +91 9585245245

(Working Hours : Monday - Saturday, 10:00am - 6:00pm)



E-Waste Management
E.info@3rrecycler.com

For E-Waste & ROHS compliance refer to www.portronics.com/ewaste