



TUNE PLUS
Upgrade Your Ride to Wireless

User Manual

Package Contents

- 1x Tune Plus
- 1x USB-A to Type-C Cable
- 1x USB-A to Type-C Connector
- 1x User Manual

Compatibility Note

1. Ensure your car supports wired CarPlay.

Method 1:

Connect your iPhone to the car using provided USB cable. If the CarPlay logo appears on your car display, your car supports wired CarPlay.

Method 2:

Check the compatible car list or confirm with your car manufacturer to ensure CarPlay support. You can also visit the official website for supported car models:



<https://www.apple.com/ios/carplay/available-models>

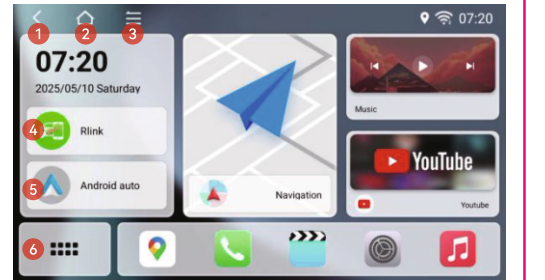
2. Works with iPhone 6 or later running iOS 10 or above for wireless CarPlay.

3. Works with Android smartphones that support the latest Android Auto and run Android 11 or higher. (Note: Huawei devices are not supported.)

How to Use CarPlay and Android Auto

1. Start your car and wait until the car's display system is fully ready.
2. Plug the Tune Plus into the USB-A or USB-C port that supports wired Apple CarPlay.

After this step, the following interface will appear:

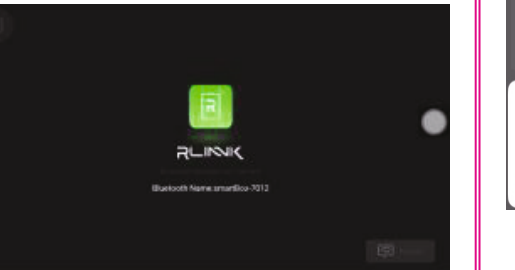


1. Back
2. Home
3. Recents
4. Rlink/CarPlay
5. Android Auto
6. Apps

Apple CarPlay Connection

Click on Rlink icon appearing on the screen.

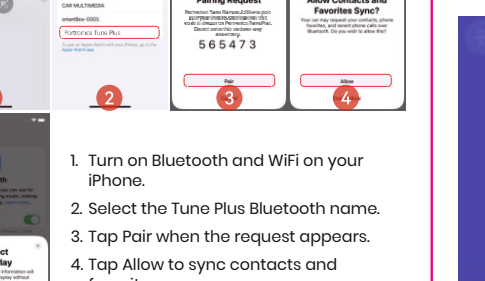
CarPlay interface



Android Auto Connection

Click on Android Auto icon appearing on the screen.

AndroidAuto interface



1. Turn on Bluetooth and WiFi on your iPhone.

2. Select the Tune Plus Bluetooth name.

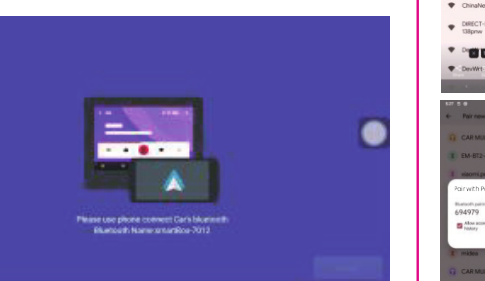
3. Tap Pair when the request appears.

4. Tap Allow to sync contacts and favorites.

5. Select Connect to CarPlay.

How to Watch Videos

To stream YouTube, Netflix, or any other entertainment apps, you must first connect Tune Plus to the internet. 1. On your car display, go to Settings > WiFi.



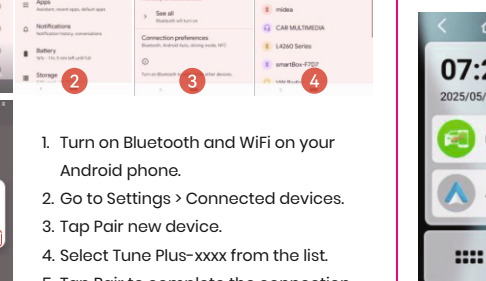
2. Select your available WiFi network or mobile hotspot.

3. Enter the password (if required) and tap Connect.

Once connected, you can enjoy seamless streaming through supported apps.

How to Watch Videos

To stream YouTube, Netflix, or any other entertainment apps, you must first connect Tune Plus to the internet. 1. On your car display, go to Settings > WiFi.



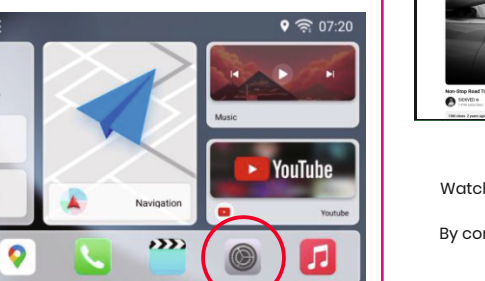
2. Select your available WiFi network or mobile hotspot.

3. Enter the password (if required) and tap Connect.

Once connected, you can enjoy seamless streaming through supported apps.

How to Watch Videos

To stream YouTube, Netflix, or any other entertainment apps, you must first connect Tune Plus to the internet. 1. On your car display, go to Settings > WiFi.



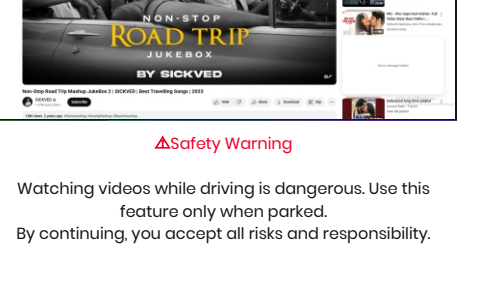
2. Select your available WiFi network or mobile hotspot.

3. Enter the password (if required) and tap Connect.

Once connected, you can enjoy seamless streaming through supported apps.

How to Watch Videos

To stream YouTube, Netflix, or any other entertainment apps, you must first connect Tune Plus to the internet. 1. On your car display, go to Settings > WiFi.



2. Select your available WiFi network or mobile hotspot.

3. Enter the password (if required) and tap Connect.

Once connected, you can enjoy seamless streaming through supported apps.

Safety Warning

Watching videos while driving is dangerous. Use this feature only when parked. By continuing, you accept all risks and responsibility.



www.portronics.com
For Support
Visit : www.portronics.com
E-mail : help@portronics.com
Contact No. : +91 9555245245
(Working Hours: Monday - Saturday, 10:00am - 6:00pm)

E-Waste Management
E-mail : info@3rrecycler.com
For E-Waste & ROHS compliance
refer to www.portronics.com/ewaste

