



**TUNE PLUS**  
Upgrade Your Ride to Wireless

User Manual

### Package Contents

- 1 x Tune Plus
- 1 x Type-C to Female USB-A Connector
- 1 X USB-A to Type-C Cable
- 1 x User Manual

### Compatibility Note

- This model supports Android Auto as well. In order to switch to Android Auto, press the A/C button twice.
- Red color indicator - Android Auto mode
- Green color indicator - CarPlay Mode
- Pressing A/C button for more 8-10 seconds will hard reset the device. One would require to connect their phone again to the device after hard reset.
- Works with iPhone 13 or later running iOS 15 or above for wireless CarPlay.
- Works with Android smart phones that support the latest Android Auto and run Android 12 or higher. (Note: Huawei devices are not supported.)

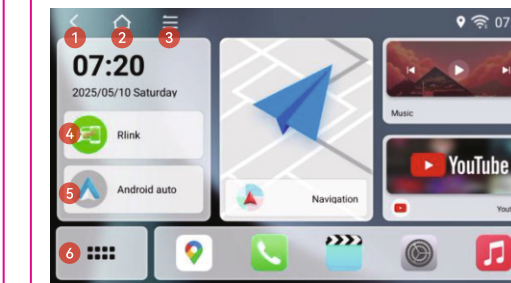
### How to Use CarPlay and Android Auto

- This model supports Android Auto as well. In order to switch to Android Auto, press the A/C button twice.
- Red color indicator - Android Auto mode
- Green color indicator - CarPlay Mode
- Pressing A/C button for more 8-10 seconds will hard reset the device. One would require to connect their phone again to the device after hard reset.
- Works with iPhone 13 or later running iOS 15 or above for wireless CarPlay.
- Works with Android smart phones that support the latest Android Auto and run Android 12 or higher. (Note: Huawei devices are not supported.)

### How to Use CarPlay and Android Auto

- Start your car and wait until the car's display system is fully ready.
- Plug the Tune Plus into the USB-A or USB-C port that supports wired Apple CarPlay.

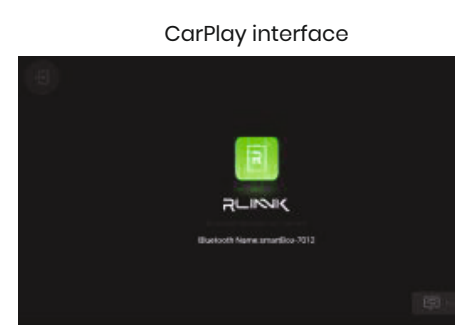
After this step, the following interface will appear:



- 1. Back
- 2. Home
- 3. Recents
- 4. Rlink/CarPlay
- 5. Android Auto
- 6. Apps

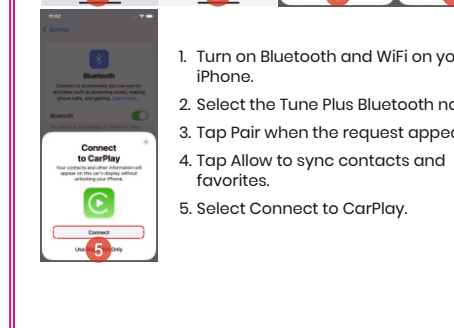
### Android Auto Connection

- On your car display, tap the Rlink/Android Auto icon. The Bluetooth connection screen will appear automatically.
- Click on Rlink icon appearing on the screen.



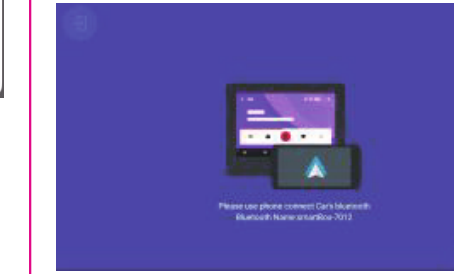
### Apple CarPlay Connection

- On your car display, tap the Rlink/Android Auto icon. The Bluetooth connection screen will appear automatically.
- Click on Rlink icon appearing on the screen.



### How to Watch Videos

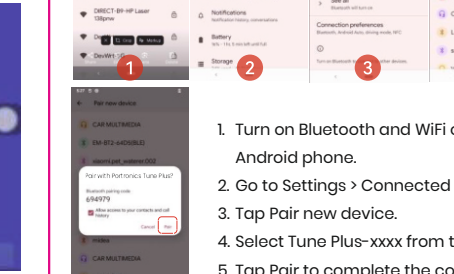
- To stream YouTube, Netflix, or any other entertainment apps, you must first connect Tune Plus to the internet.
- On your car display, go to Settings > WiFi.



- 1. Turn on Bluetooth and WiFi on your Android phone.
- 2. Go to Settings > Connected devices.
- 3. Tap Pair new device.
- 4. Select Tune Plus-xxxx from the list.
- 5. Tap Pair to complete the connection.

### How to Watch Videos

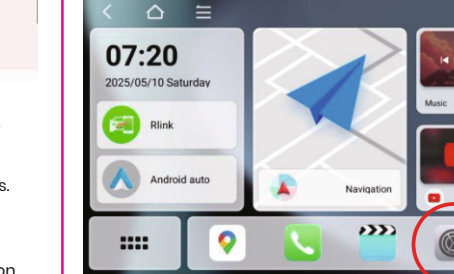
- To stream YouTube, Netflix, or any other entertainment apps, you must first connect Tune Plus to the internet.
- On your car display, go to Settings > WiFi.



- 1. Turn on Bluetooth and WiFi on your Android phone.
- 2. Go to Settings > Connected devices.
- 3. Tap Pair new device.
- 4. Select Tune Plus-xxxx from the list.
- 5. Tap Pair to complete the connection.

### How to Watch Videos

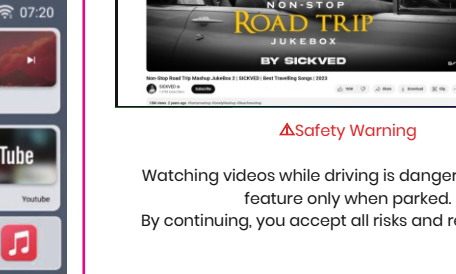
- To stream YouTube, Netflix, or any other entertainment apps, you must first connect Tune Plus to the internet.
- On your car display, go to Settings > WiFi.



- 1. Turn on Bluetooth and WiFi on your Android phone.
- 2. Go to Settings > Connected devices.
- 3. Tap Pair new device.
- 4. Select Tune Plus-xxxx from the list.
- 5. Tap Pair to complete the connection.

### How to Watch Videos

- To stream YouTube, Netflix, or any other entertainment apps, you must first connect Tune Plus to the internet.
- On your car display, go to Settings > WiFi.



- 1. Turn on Bluetooth and WiFi on your Android phone.
- 2. Go to Settings > Connected devices.
- 3. Tap Pair new device.
- 4. Select Tune Plus-xxxx from the list.
- 5. Tap Pair to complete the connection.

### Safety Warning

Watching videos while driving is dangerous. Use this feature only when parked. By continuing, you accept all risks and responsibility.



www.portronics.com  
For Support  
Visit : www.portronics.com  
E-mail : help@portronics.com  
Contact No: +91 9555245245  
(Working Hours: Monday - Saturday, 10:00am - 6:00pm)

CE RoHS  
E-Waste Mana emrg  
E: info@3rrecycle.com  
For E-Waste & ROHS compliance refer to www.portronics.com/ewaste