

VAYU 10

RECHARGEABLE TYRE INFLATOR



USER MANUAL

PACKAGE CONTENTS

Thank you for choosing Vayu 10. This portable and easy-to-use device is designed to help you inflate car tyres, bicycle tyres, sports balls, and more with precision and convenience. Please read this manual carefully before use to ensure safe and proper operation.

PACKAGE CONTENTS

1. Only use the inflator for its intended applications.
2. Avoid inflating objects beyond their recommended pressure limits.
3. Do not operate the inflator in extreme temperatures or near flammable materials.
4. Keep away from children to prevent accidental operation.
5. Allow the inflator to cool down after prolonged use to prevent overheating.
6. Charge the battery fully before first use.
7. Store the inflator in a dry and ventilated place.
8. Avoid exposure to water or other liquid

PACKAGE CONTENTS



Tyre Inflator



Air Hose

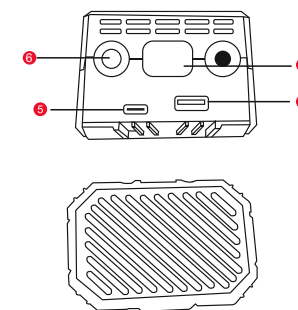
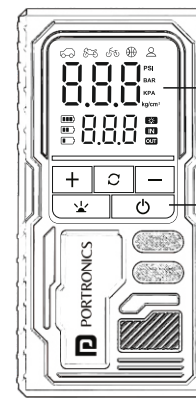


Multifunctional Nozzles



USB Charging Cord

PHYSICAL SPECIFICATIONS

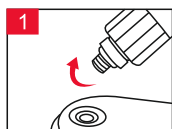


- 1 Pressure Display
- 2 Power Button
- 3 LED Light
- 4 USB Emergency Port
- 5 Type-C Charging port
- 6 Air Hose Interface

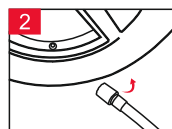
TECHNICAL SPECIFICATIONS

Specification	Details
Material	ABS Plastic
Dimension	89 x 47.5 x 137 mm
Power	50W
Charging Input	5V/2A
USB Output	5V/1A
LED Consumption	1W

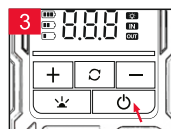
OPERATION GUIDE



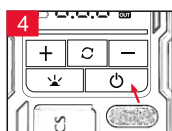
Connect air hose to the inflator



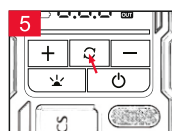
Screw the air hose to the tyre valve



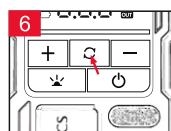
Press and hold for 3 seconds to wake up the display



Press "P" shortly to start inflating



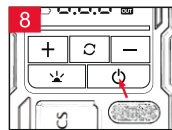
Press the "M" button to change 4 different modes "Car, Motorcycle, Bicycle, Ball"



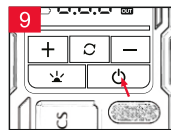
Long press "M" three seconds to change the pressure unit



You can press "+" or "-" to increase or decrease target pressure



Short press "P" to start inflating



when the real pressure reaches the target pressure, it will stop automatically. you can also stop inflating any time by pressing "P" Button. Make sure to turn off power switch after using

5 BUILT-IN INFLATION MODES



Cars



Motorcycles



Bicycles



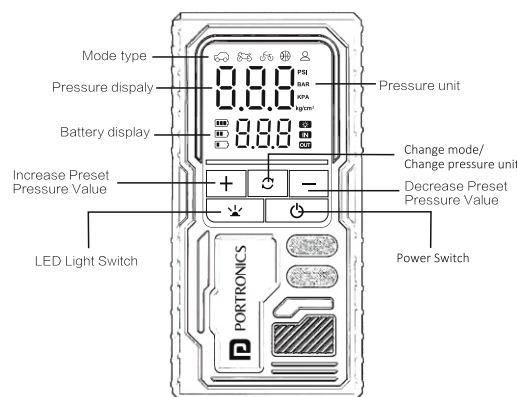
Sport Balls



Custom

PRESSURE PRE-SET

Long Press "M" Button change the pressure unit, Press : "+" or "-" increase or decrease the target pressure, after numbers stop flashing, Press "P" button to start inflation, When it reach to the desired pressure, it will stop automatically.



BATTERY DISPLAY



Digital display screen has three battery modes

First battery mark display: 100% > power > 70%
Second battery mark display: 70% > power > 40%
Third battery mark display: 40 > power > 10%
Third battery mark display flashing: Battery power less than 10% , Need to recharge.

TROUBLESHOOTING

Problem	Cause	Solution
Inflator does not start	Battery is low	Charge the battery fully
Inflation is slow	Nozzle not attached properly	Ensure a secure connection
Inflator stops suddenly	Overheating protection activated	Allow it to cool down