



# VAYU 5.0 LITE

## PORTABLE TYRE INFLATOR



(Please read this manual prior to using this product)

USER MANUAL

### WARNING

Children must not operate the tire inflator alone.  
Never use the tire inflator in direct sunlight, high temperatures, or high-pressure environments.  
Keep the tire inflator away from water and rain; it is not suitable for use in wet conditions.  
To avoid damage, excessive heat, toxic fumes, fire, or explosion, turn it off and allow the tire inflator to cool for 30 minutes after 10 minutes of use.  
Always turn off the power switch after use.  
Before using this product, carefully read all warnings and instructions. Improper use may result in product damage, which is not covered by the seller.

### ATTENTION

To minimize the risk of electric shock, avoid exposing your tire inflator to rain. It is recommended to store it indoors and away from any sources of fire.

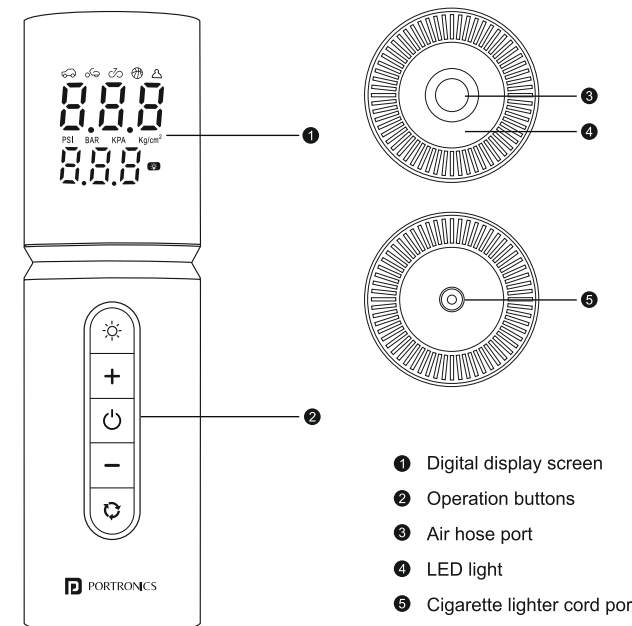
**Please note:**  
Slight heating during normal operation is expected and considered normal.

To prolong the air pump's lifespan, avoid continuous use for more than 10 minutes. If extended use is required, allow intermittent breaks to let the tire inflator cool down.

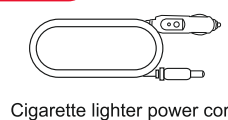
### PRODUCT PARAMETER

Product Model	Vayu 5.0 Lite
Voltage	100W
Power	DC 12V

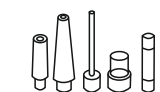
### LAYOUT



#### Accessory

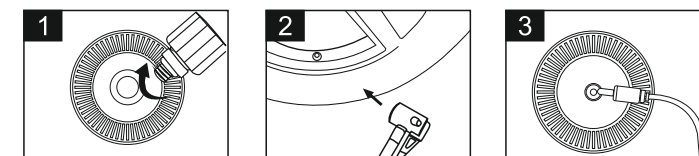


Cigarette lighter power cord



Multifunctional air nozzle

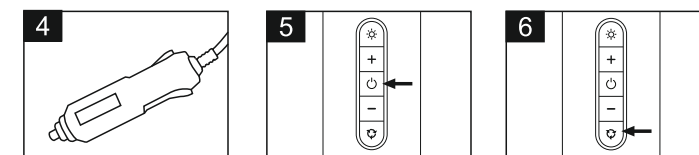
### OPERATION INSTRUCTION



Connect the air hose to the main body .

Connect the air hose to the tire valve.

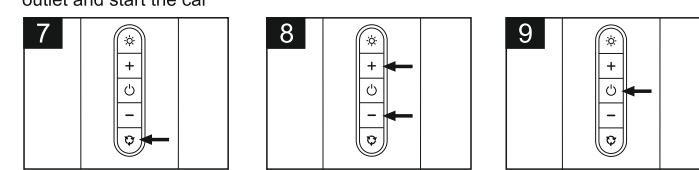
Connect the power cord to the main body



Insert the cigarette lighter plug into the car 12v outlet and start the car

Long press the power button to wake up the pressure display

Long press the mode button to select the pressure unit



Press the mode button to choose among 5 built in intelligent modes respectively correspond to car, motorcycle, bicycle and balls .OPTIONAL

You can press the +/- buttons to increase or decrease target pressure .

Press the power button to start inflating.

## FINISHED

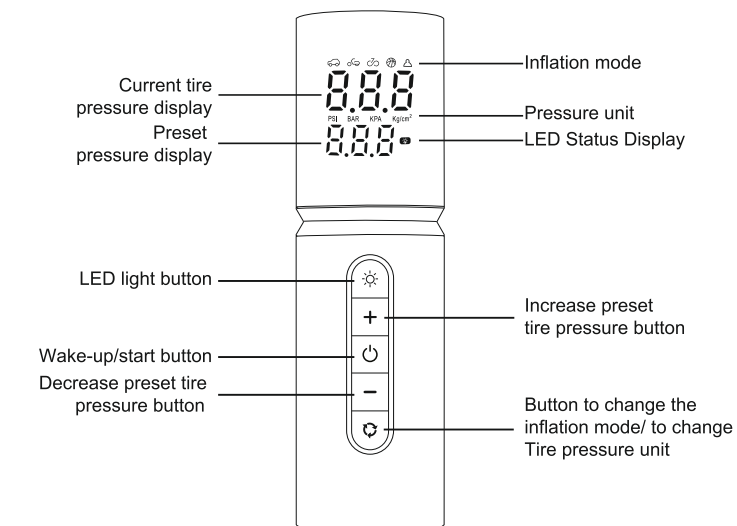
When the actual pressure reaches target pressure, it will stop automatically. You can also stop inflating any time by pressing the power button .

### 5 BUILT IN INFLATION MODES



### PRESSURE PRESET

Long press the mode button to select the pressure unit. Press the "+" or "-" to increase or decrease the target pressure figure. After the figure stop flashing, press the power button to start inflating. The product will stop automatically after target pressure is reached.



www.portronics.com

For Support

Visit : www.portronics.com

E-mail : help@portronics.com

Contact No.: +91 9555245245

(Working Hours: Monday - Saturday, 10:00am - 6:00pm)



E-Waste Management  
E: info@3rrecycler.com

For E-Waste & ROHS compliance  
refer to www.portronics.com/ewaste